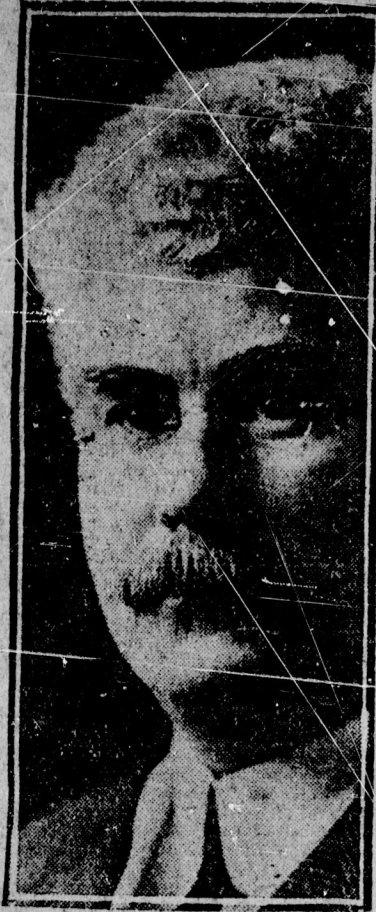


A-34

ELECTED MEMBERS OF THE BOSTON CITY COUNCIL



(Photograph by Marceau.)  
Henry E. Hagan.



(Photograph by Chickering.)  
Daniel W. Lane.



James T. Moriarty.

SCHOOL BOARD



Richard J. Lane.

# Vote for Mayor by Precincts.

Precinct 7	223	244	133	5
Precinct 8	150	112	140	5
Precinct 9	95	133	208	3
Totals	1047	1204	1400	23

	Gallivan	Cady	Peters	Thane
<b>WARD ONE.</b>				
Precinct 1	143	204	156	40
Precinct 2	117	167	121	24
Precinct 3	89	133	125	12
Precinct 4	77	150	91	27
Precinct 5	73	106	100	27
Precinct 6	59	82	148	23
Precinct 7	96	100	217	30
Precinct 8	50	81	183	22
Totals	704	1023	1141	206
<b>WARD TWO.</b>				
Precinct 1	85	142	78	23
Precinct 2	79	149	99	25
Precinct 3	75	197	111	23
Precinct 4	78	140	74	29
Precinct 5	77	147	75	29
Precinct 6	80	121	90	51
Precinct 7	96	95	61	17
Precinct 8	118	119	88	17
Totals	688	1020	647	232
<b>WARD THREE.</b>				
Precinct 1	64	271	32	42
Precinct 2	60	204	62	35
Precinct 3	56	154	75	37
Precinct 4	59	155	81	30
Precinct 5	35	150	96	31
Precinct 6	29	170	43	70
Precinct 7	59	160	94	76
Totals	412	1275	483	321
<b>WARD FOUR.</b>				
Precinct 1	69	236	53	94
Precinct 2	66	182	71	46
Precinct 3	49	109	89	49
Precinct 4	75	171	63	75
Precinct 5	37	136	36	99
Precinct 6	43	120	30	106
Precinct 7	55	148	34	130
Totals	385	1123	386	500
<b>WARD FIVE.</b>				
Precinct 1	59	144	135	8
Precinct 2	51	119	147	19
Precinct 3	69	123	192	1
Precinct 4	27	36	247	1
Precinct 5	29	77	234	4
Precinct 6	34	62	283	5
Precinct 7	27	64	338	2
Precinct 8	66	72	227	8
Precinct 9	99	116	295	8
Precinct 10	57	67	265	14
Precinct 11	74	75	115	12
Totals	622	955	2518	65
<b>WARD SIX.</b>				
Precinct 1	74	89	179	2
Precinct 2	121	84	135	6
Precinct 3	114	98	100	2
Precinct 4	82	77	112	3
Precinct 5	191	112	154	2
Precinct 6	119	139	66	4
Precinct 7	115	170	107	4
Precinct 8	78	93	187	4
Precinct 9	72	120	175	4
Totals	873	982	1166	31
<b>WARD SEVEN.</b>				
Precinct 1	80	58	263	1
Precinct 2	81	74	239	3
Precinct 3	65	82	256	8
Precinct 4	53	50	303	2
Precinct 5	52	84	299	1
Precinct 6	71	49	212	7
Precinct 7	87	78	291	4
Precinct 8	63	28	297	1
Precinct 9	58	58	289	1
Totals	610	571	2454	27
<b>WARD EIGHT.</b>				
Precinct 1	50	51	190	5
Precinct 2	61	76	200	3
Precinct 3	63	76	221	6
Precinct 4	59	51	194	9
Precinct 5	60	153	144	2
Precinct 6	22	32	340	1
Precinct 7	17	19	361	1
Precinct 8	45	33	352	2
Precinct 9	55	46	284	1
Totals	423	487	2370	28

<b>WARD NINE.</b>				
Precinct 1	286	117	12	1
Precinct 2	180	138	11	1
Precinct 3	155	140	17	0
Precinct 4	221	129	31	1
Precinct 5	247	138	14	1
Precinct 6	210	138	54	8
Precinct 7	170	192	22	2
Precinct 8	176	185	34	1
Precinct 9	204	153	59	1
Totals	1801	1310	224	15
<b>WARD TEN.</b>				
Precinct 1	129	118	41	3
Precinct 2	173	125	77	0
Precinct 3	184	173	47	2
Precinct 4	221	132	61	2
Precinct 5	192	171	73	3
Precinct 6	226	200	67	5
Precinct 7	178	133	95	2
Precinct 8	179	115	66	2
Precinct 9	193	146	121	0
Total	1684	1328	619	13
<b>WARD ELEVEN.</b>				
Precinct 1	169	151	23	1
Precinct 2	173	165	13	1
Precinct 3	107	144	34	0
Precinct 4	121	140	41	3
Precinct 5	184	197	52	3
Precinct 6	141	144	161	3
Precinct 7	196	195	86	7
Precinct 8	201	146	146	4
Precinct 9	183	122	93	2
Totals	1471	1402	657	24
<b>WARD TWELVE.</b>				
Precinct 1	69	204	92	1
Precinct 2	31	213	50	1
Precinct 3	52	255	68	1
Precinct 4	59	255	46	1
Precinct 5	51	165	106	2
Precinct 6	59	216	93	1
Precinct 7	64	296	36	6
Precinct 8	98	235	105	2
Precinct 9	85	290	102	1
Totals	563	2223	764	8
<b>WARD THIRTEEN.</b>				
Precinct 1	90	88	204	1
Precinct 2	35	70	168	2
Precinct 3	32	89	205	3
Precinct 4	65	95	184	2
Precinct 5	47	154	159	1
Precinct 6	59	218	105	1
Precinct 7	23	143	162	1
Precinct 8	41	82	224	1
Precinct 9	48	120	118	0
Totals	412	1069	1629	19
<b>WARD FOURTEEN.</b>				
Precinct 1	105	221	244	5
Precinct 2	54	212	83	2
Precinct 3	46	234	75	1
Precinct 4	63	245	120	2
Precinct 5	77	229	97	3
Precinct 6	49	267	141	1
Precinct 7	47	309	139	0
Precinct 8	33	161	151	2
Precinct 9	44	163	179	0
Total	496	1941	1229	16
<b>WARD FIFTEEN.</b>				
Precinct 1	41	122	179	1
Precinct 2	62	162	177	2
Precinct 3	44	233	163	3
Precinct 4	51	203	143	1
Precinct 5	39	178	191	2
Precinct 6	54	168	175	1
Precinct 7	66	102	167	2
Precinct 8	33	85	211	3
Precinct 9	31	161	227	3
Totals	437	1409	1638	16
<b>WARD SIXTEEN.</b>				
Precinct 1	68	87	230	5
Precinct 2	66	87	246	2
Precinct 3	89	132	175	1
Precinct 4	98	127	173	1
Precinct 5	104	113	187	8
Precinct 6	107	110	207	1
Precinct 7	93	79	275	4
Precinct 8	151	93	210	1
Precinct 9	159	94	289	2
Totals	935	922	2043	26
<b>WARD SEVENTEEN.</b>				
Precinct 1	105	138	100	3
Precinct 2	95	154	111	3
Precinct 3	96	154	72	1
Precinct 4	93	83	172	1
Precinct 5	104	83	172	1
Totals	593	606	532	10

<b>WARD EIGHTEEN.</b>				
Precinct 1	124	116	149	2
Precinct 2	175	82	189	1
Precinct 3	165	130	107	2
Precinct 4	153	138	303	4
Precinct 5	177	166	102	1
Precinct 6	165	214	59	1
Precinct 7	115	161	65	1
Precinct 8	139	141	182	6
Precinct 9	110	113	162	5
Totals	1323	1310	1093	22
<b>WARD NINETEEN.</b>				
Precinct 1	145	74	198	8
Precinct 2	115	97	230	1
Precinct 3	100	76	203	2
Precinct 4	103	62	269	4
Precinct 5	116	63	197	5
Precinct 6	89	90	231	2
Precinct 7	105	68	190	1
Precinct 8	58	45	287	3
Precinct 9	53	62	255	4
Totals	915	637	2060	30
<b>WARD TWENTY.</b>				
Precinct 1	88	103	139	1
Precinct 2	89	88	163	1
Precinct 3	141	121	234	2
Precinct 4	113	66	219	2
Precinct 5	149	151	203	1
Precinct 6	57	132	113	1
Precinct 7	74	159	180	0
Precinct 8	95	105	237	0
Precinct 9	70	97	214	1
Totals	876	1032	1753	6
<b>WARD TWENTY-ONE.</b>				
Precinct 1	110	88	263	11
Precinct 2	110	83	263	11
Precinct 3	100	86	235	3
Precinct 4	87	78	186	2
Precinct 5	81	83	268	3
Precinct 6	65	63	252	1
Precinct 7	68	117	193	1
Precinct 8	38	122	232	1
Precinct 9	68	75	152	1
Totals	762	843	1869	22
<b>WARD TWENTY-TWO.</b>				
Precinct 1	46	114	237	7
Precinct 2	23	67	234	8
Precinct 3	56	210	214	2
Precinct 4	39	179	199	3
Precinct 5	37	132	264	1
Precinct 6	36	227	194	1
Precinct 7	38	69	304	4
Precinct 8	43	123	193	2
Precinct 9	54	122	264	1
Totals	285	1253	2289	29
<b>WARD TWENTY-THREE.</b>				
Precinct 1	44	117	323	2
Precinct 2	32	104	303	4
Precinct 3	31	85	296	3
Precinct 4	46	79	332	1
Precinct 5	48	73	371	4
Precinct 6	37	62	365	4
Precinct 7	35	70	397	2
Precinct 8	23	49	376	1
Precinct 9	37	131	263	0
Totals	349	771	3042	61
<b>WARD TWENTY-FOUR.</b>				
Precinct 1	42	148	194	4
Precinct 2	77	115	193	2
Precinct 3	65	73	270	1
Precinct 4	35	49	270	2
Precinct 5	44	112	156	3

# Peters Wins by 9074 in Unusually Heavy Vote

(Continued from Page One.)

Good Government Association leaders, and the anti-Curley men generally, did not figure on over 82,000, while the mayor estimated a total vote of 78,500. Although the registration was over 113,000, thousands of voters were in the army and navy and unable to vote.

The consequences of the defeat of Mayor Curley are far-reaching. It means that Dist.-Atty. J. C. Pelletier, Sheriff John A. Keliher and Clerk of Courts Francis A. Campbell will each and every one have to fight for re-nominations by their own party, and there will be renewed talk of "the county ring."

Never before, in the history of the county and city, did the incumbents of these offices so far forget the dignity of their respective offices as to go on the stump and vie with one another in vituperation of rival candidates for the mayoralty.

## Racial and Religious Issue Rebuked.

The introduction by at least two of these officials of the racial and religious issue will not be soon forgotten, and last night analysts of the returns agreed that the extraordinary outpouring of the "stay-at-home" vote was the best explanation of the running up of the total ballots cast to over 88,000, or more than 8000 above the total cast in the Curley-Kenny fight of four years ago, despite the fact that some 7000 voters yesterday were unable to vote because of being in the service of Uncle Sam.

The falling off of Mayor Curley's vote from the 43,240 he received four years ago to 23,850, or a loss of 19,390, furnishes another indication of how far his star has descended in the political horizon, and puts him out of the running for the United States Senate next fall.

The defeat of Curley and Curleyism has been a foregone conclusion, and the only possible doubt had been whether Congressman Gallivan or Andrew J. Peters would be the candidate to administer the knockout blow. The congressman made a splendid fight, and the big vote he rolled up demonstrates his popularity.

Against him Curley cohorts last night raised exceedingly bitter cries and threats of vengeance, but such threats are futile when the size of his vote is considered.

### Tague Men Went to Gallivan.

Congressman Tague's vote would have been much larger but for the boom given to Gallivan by the support of John E. Fitzgerald and a considerable part of the Jewish element, headed by Simon Swig, who bitterly resented Curley's high-handed act in removing the city funds from the Tremont Trust Company, of which Swig is vice-president, and cordially remembered Gallivan's fight against the anti-immigration bill.

The mayor estimated that the support given Gallivan by the Post would raise the latter's vote by 12,000, but underestimated the force of his own boomerang in vilifying the press.

The Tague organization lacked funds, and his campaign flowered too early. Neither Gallivan nor Tague attacked the other, and many Tague men went to Gallivan when it was seen that the Charlestown man had no chance.

There never was any question of the result from the time when the first returns came in, at 4:13, at City Hall, from ward 6, South end, and at 5 o'clock

the newsboys were crying "Peters ed."

Curley captured five wards, or more than was allowed him by the Good Government leaders' estimates published in these columns yesterday. He carried ward 2, East Boston; wards 3 and 4, in Charlestown; ward 12, his old "Tammany ward," and ward 26, which is John Lee's bailiwick in Brighton. The ward not allowed to Curley was 4, which is Congressman Tague's, and it was only ward which the Charlestown congressman was expected to win, but even that went against him.

Gallivan carried every one of the wards which it was estimated would be his—9, 10, 11 and 18. His congressional district stood by him nobly, so far as South Boston was concerned.

### Where Republicans Scored.

Peters's victory is due in large part, of course, to the Republican vote. He won every Republican ward, 7, 8, 16, 19, 21, 23, 24 and 25, and the two sometimes-doubtful wards 1 and 20. Gov. McCall in 1916, the presidential year, received 26,749 votes, but the maximum Republican vote cast yesterday was probably somewhat under 30,000, due to the large number of absentees.

Martin M. Lomasney failed to give Peters anywhere near as many votes as had been expected. Ward 5 gave Peters, 2518; Curley, 955; Gallivan, 622, and Tague, 65.

As for the vote by congressional districts, the tables printed elsewhere show that Curley captured Tague's district easily, Peters running second, and carried Gallivan's by over 600, Peters running second. But the 11th district, now Tinkham's, made up largely of territory which sent Peters to Congress, rendered a two-to-one vote for Peters over Curley.

Peters carried his home precinct, 8 of ward 24, thus: Peters 193, Curley 123, Gallivan 43, Tague 2.

Curley's home precinct is 1, of ward 22. He lost it thus: Curley 114, Peters 37, Gallivan 46, Tague 7.

Gallivan's home precinct is 4, of ward 9. The vote there was: Gallivan 231, Curley 129, Peters 21, Tague 1.

Tague's home precinct is 5, of ward 4. He ran second to the mayor, the vote being: Curley 136, Tague 99, Gallivan 37, Peters 36.

Curley carried his old home precinct, 7 of ward 12, in the Tammany ward, as was expected: Curley 226, Gallivan 67, Peters 36, Tague 0.

## G. G. A. CONTROLS CITY COUNCIL

Much Expected of Administration Where Executive and Body Are in Accord.

### LANE HIGH MAN AT POLLS

By the re-election of Henry E. Hagan and the election of Daniel W. Lane to the city council, the Good Government Association preserves its balance of power. Of the nine members, Councilmen Attridge, Collins, Hagan, Lane and Storrow can be depended on to stand for good government, and to be joined on occasion by Councilman Ford.

Much is expected of the city government for 1918, because it will be the first time since the adoption of the new charter that the executive and the majority of the council have been in accord.

Labor Leader, Moriarty, the third member of the council elected yesterday, is a doubtful element, but has displayed ability.

Daniel W. Lane was high man. He received the solid Republican vote as well as that of the independents, and of many Democrats who voted for him when he ran for Congress.

Councilman Hagan ran below Moriarty, but well above Cassidy, who met defeat for the second time.

Councilman Wellington retires after but a single year in the council. His name appeared first on the ballot and he has been very friendly with the mayor lately, and indeed was generally credited with being on the mayor's "slate," which also included Cassidy and Moriarty.

Hurwitz, the defeated G. G. A. candidate, ran sixth, but was less than 200 votes behind Wellington. Hurwitz was nearly 5000 votes ahead of Leonard, who expected to get the G. G. A. endorsement, and for whom some of the G. G. A. voters marked a cross despite the switch to Hurwitz.

Wellington carried both the East Boston wards as top man, but in no other ward came within the charmed circle of the three.

Lomasney's directions as to how ward 5 should vote resulted in Hagan, Moriarty and Wellington finishing in the order named; Cassidy, who was supposed to get his share as one of the trio, was left out in the cold. It was hard lines for so popular an Elk.

Although Carr's name was last on the ballot, it was Tom Coffey, the elevator man, who trailed the procession.